

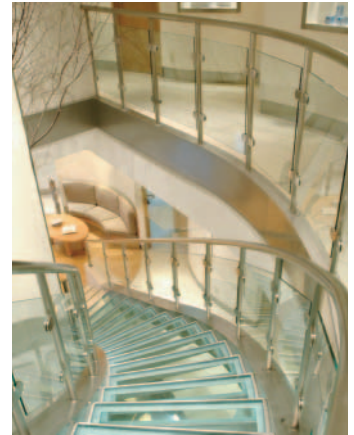


## Embassy Suites Markham - Monumental Staircase

Location Markham, Ontario  
Designer / Architect Page + Steele Architects Planners  
Duration Nov 2002 - Jan 2003

Scope - SML was contracted to fabricate and install a monumental stainless steel staircase, st. stl. baseboards, glass smoke baffles, mezzanine guardrails and balustrades, st. stl. trim at waterfall and st. stl. bulkhead cladding.

Highlights - This beautiful custom monumental staircase features glass treads, five different curved radii, glass panels, stainless steel balustrades and precision welding.



*Monumental stainless steel staircase*



*Monumental stainless steel staircase features five different curve radii, glass treads and glass panels*



*Glass treads revealing pond under staircase*



*Polished stainless steel braces*



*Precision welded and finished guardrail corner*