

Governor Jeb Bush - Commemorative Paperweight

Location Tallahassee, Florida
Designer / Architect Soheil Mosun Limited
Duration Nov 2003 - Nov 2003

Scope - To design and manufacture a unique gift which highlights SML's design and manufacturing abilities; as well as showcasing some of its advanced in-house manufacturing technologies.

Highlights - The round profile of the paperweight was waterjet cut from 5/8" thick solid bronze plate. The graphics on the outer perimeter were precision engraved using three-dimensional machining technology and the graphics on the front and back faces were acid etched. The paperweight was then brought to a mirror polished finish and then 24-karat gold plated to maintain its luster for many years to come. The accompanying custom case was turned from solid mahogany, making this a true one-of-a-kind piece.



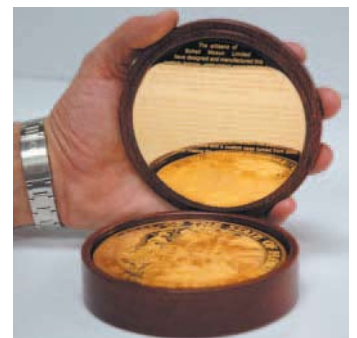
Paperweight with mahogany case



Computer controlled 3D machined graphics on outer perimeter



24-karat gold plated bronze paperweight and solid mahogany case



Etched plate in case lid



Acid etched graphics on back of paperweight