



## Clarica Centre - Exterior Sign and Directory

Location Toronto, Ontario  
Designer / Architect Gervais Harding Associates  
Duration Dec 2005 - Nov 2006

Scope - Soheil Mosun Limited was engaged to engineer, fabricate and install an internally illuminated pylon sign for the front of the Clarica Centre.

Highlights - This exterior directory sign is sturdy, welded aluminum cladding on an internal steel frame. Back-lit letters composed of clear acrylic with translucent vinyl with a white diffuser are incised into the faces. This sign serves as both a building and major tenant identifier.



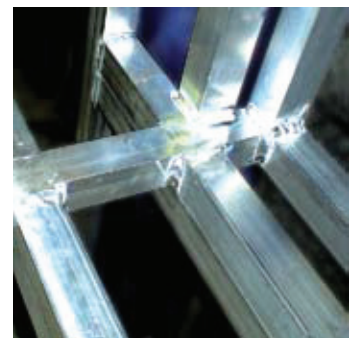
Detail of the Clarica logo and the back-lit heading panel



Detail of the incised and infilled acrylic lettering



The full sign and directory installed at Clarica Centre



Rugged and sturdy framework construction



Welded aluminum over steel frame