



## Saddlebrook Pappillion - Glass Balustrades & Solid Oak Railings

Location Toronto, Ontario  
Designer / Architect Flora Di Menna Design  
Duration Oct 2005 - Jun 2006

Scope - Soheil Mosun Limited was retained to design and manufacture a stair rail for a Mississauga condominium recreation centre.

Highlights - The spiral railing design features faceted clear 1/2" thick tempered glass panels with polished edges and painted aluminum risers and shoes. The curved top rail was made from solid oak and stained to match existing wood trim and paneling.



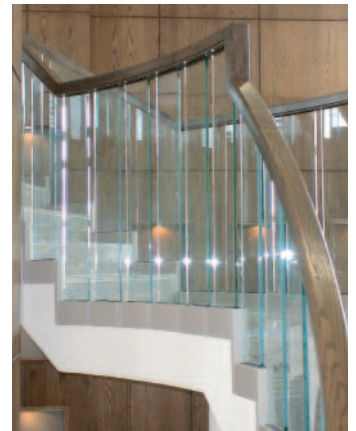
*Close-up of solid oak top rail*



*Tempered glass panels and solid oak top rails*



*Clear tempered glass panels, painted aluminum risers and shoes, and a curved oak top rails*



*Tempered glass panels and solid oak top rail*



*Structurally engineered glass shoes and risers*